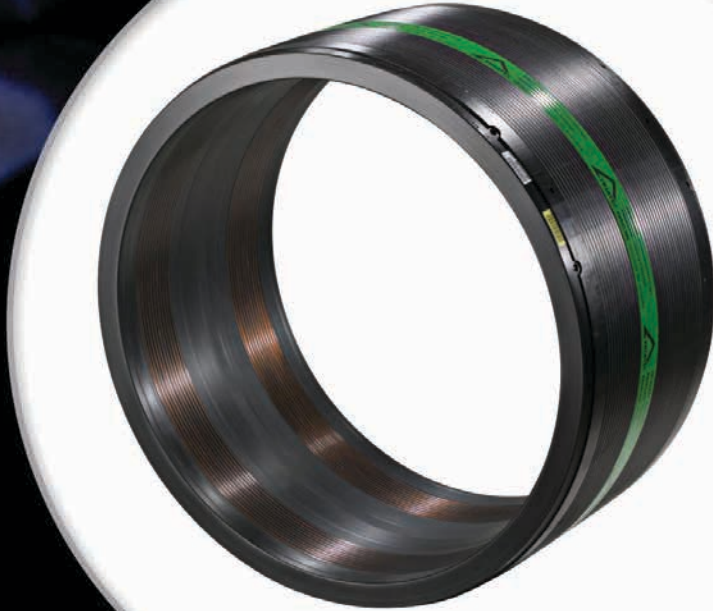




24" DIPS COUPLING

PRODUCT INFORMATION BULLETIN

Our Range of Couplings Just Got BIGGER!

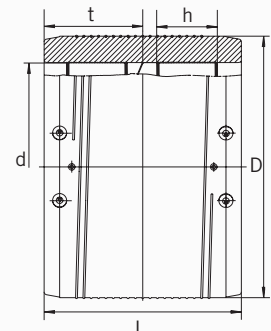
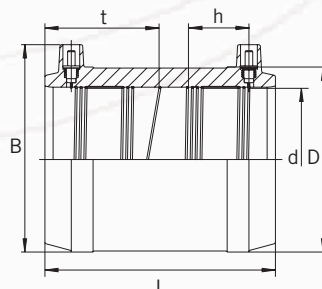


IPEX expands its industry leading FRIATEC Ductile Iron Pipe (DIPS) couplings with the largest size to date.

This new 24" DIPS coupling easily connects to PE pipes 3408/4710 with extra wide fusion zones. An increased wall thickness and coupler depth provide maximum stability without the use of holding clamps. With the lowest intensity current draw on the market, you can fuse couplings in rapid succession without stressing your fusion unit.

FEATURES AND BENEFITS:

- Front and middle cold zones for an optimal pressure fused joint
- Exposed heating coil with direct contact to pipe provides maximum heat transfer
- Contacts are safe to touch
- Batch marking for easy ID
- SDR 11
- Full pressure rating – 200psi
- Preheat cycle warms components to the same temperature and fills annular space



24" DIPS Coupling (inches)

Product Code	ID Min	ID Max	D	B	L	t	h
128207	25.732	25.791	32.055	32.055	16.535	8.268	4.799
	Wgt (lbs/ea)		Fusion Time/Sec @ 73°F		Cooling Time/Min		
	166.7		870/1080 ea side		45/95/120		



Products manufactured by Friatec AG and distributed in the United States by IPEX USA LLC.

IPEX USA LLC
Toll Free: (800) 463-9572
ipexna.com