

## Closet Flange Repair Plumbing Solutions

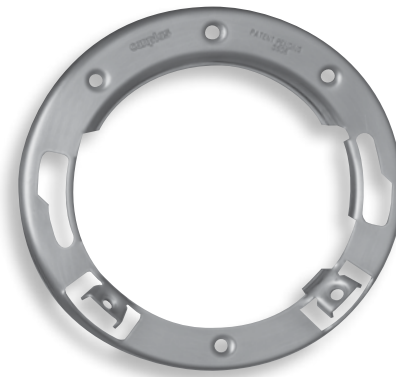
### Stainless Steel Closet Flange Repair Ring

Replaces broken or damaged adjustable ring on closet flange.

### Closet Flange Repair Ring

Material	Size	Part Number
Stainless Steel	4" x 3"	133608

Fits most 4" x 3" Closet Flanges with adjustable rings (metal or plastic)



### Features and Benefits:

- One-piece construction
- Replaces both metal and plastic closet flange rings with an inside diameter greater than 5"
- Grade 304-2B stainless steel
- Stronger than two-piece repair rings
- Will not rust (paint coated flanges are susceptible to rust)
- Paint coating not required
- Adjustable for ease of installation

### Contact us

Visit our website: [ipexna.com](http://ipexna.com) / [enduregreasemanagement.com](http://enduregreasemanagement.com)

Eastern U.S. Toll free: (800) 463-9572

Western U.S. Toll free: (888) 461-5307

### Installation Instructions

1. Remove the damaged closet flange ring.
2. Slide the protruding lip on the interior edge of the Repair Ring into the grooved channel of the flange body, lay the ring flat on the floor then rotate the ring until the closet bolt slots are in the desired position.
3. Using a screwdriver, bend the Repair Ring "claws" into the grooved channel of the closet flange body to clamp it in place.
4. Insert the toilet bolts in the closet bolt slots.
5. Fasten screws to the floor through the holes located on the ring and on the "claws".
6. Re-install toilet.

